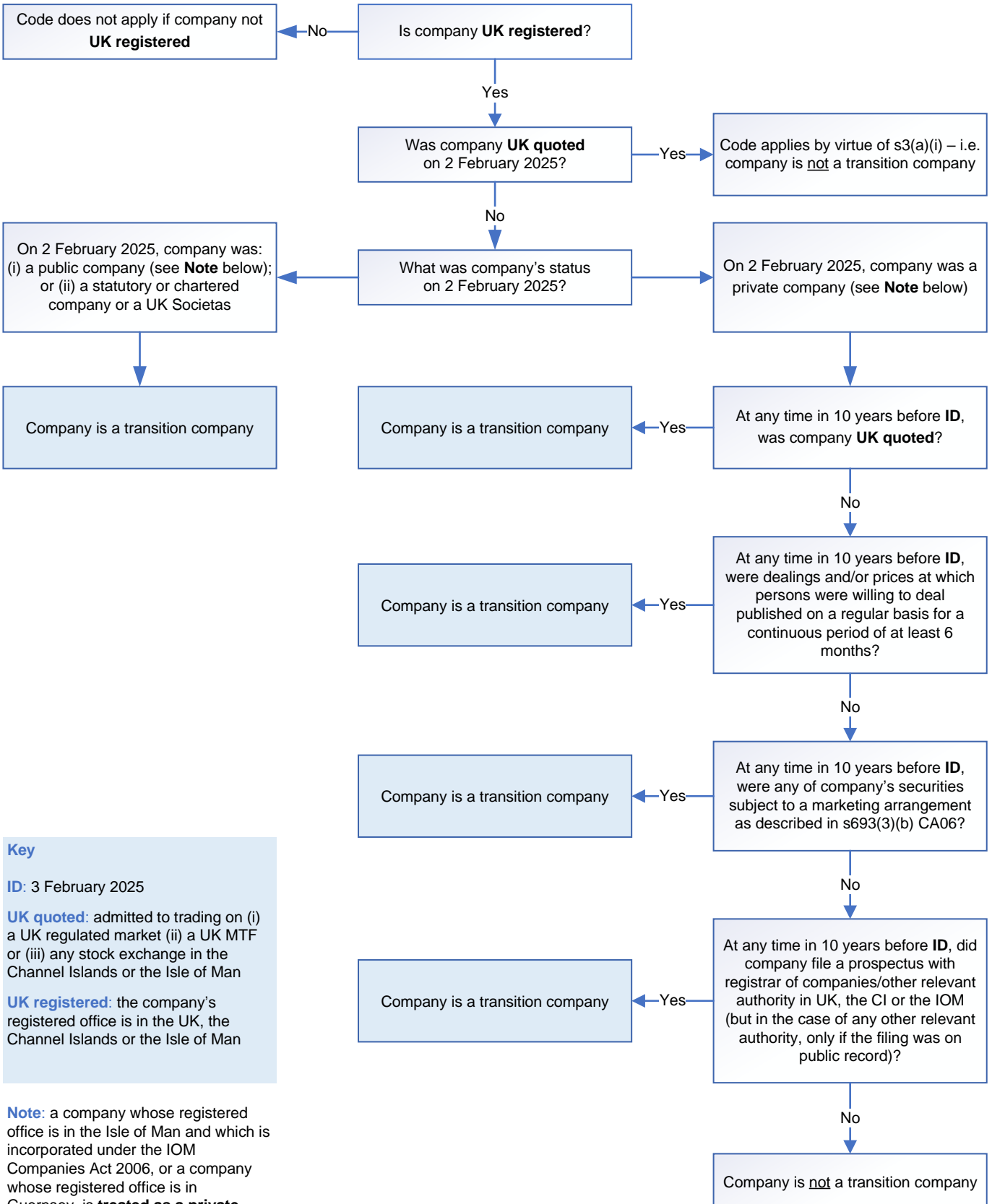


WHETHER A COMPANY IS A TRANSITION COMPANY

Whether a company is a **transition company** during the **transition period** is determined by the company's status immediately prior to the implementation date, i.e. on 2 February 2025



Key

ID: 3 February 2025

UK quoted: admitted to trading on (i) a UK regulated market (ii) a UK MTF or (iii) any stock exchange in the Channel Islands or the Isle of Man

UK registered: the company's registered office is in the UK, the Channel Islands or the Isle of Man

Note: a company whose registered office is in the Isle of Man and which is incorporated under the IOM Companies Act 2006, or a company whose registered office is in Guernsey, is **treated as a private company** (and not as a public company) for these purposes